



ALLURE INLINE HINGE AND SIDE PANEL.

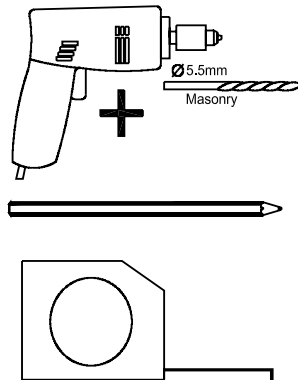
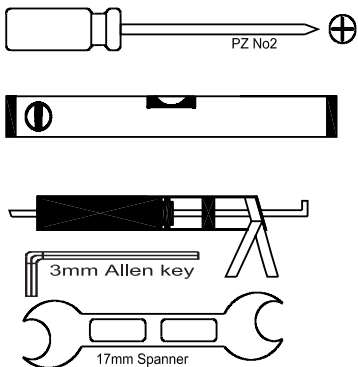
HINGE DOOR FITTING KIT

- 6 x 1 1/4"
- 5 x 1/2"
- 1 x 3/4"
- 6 x Ø2.8mm
- 2 x M5 x 20mm Bolt
- 2 x Dome Cap
- 2 x Centre Bolt
- 2 x Shoulder Bush
- 2 x Bush
- 2 x 8mm Bush
- 1 x **IMAGE SHOWERS** Sticker to be added after installation
N.B Guarantee is not valid unless logo sticker is placed on the door.

SIDE PANEL FITTING KIT

- 2 x 1/2" csk
- 2 x M5 x 20mm Bolt
- 2 x Centre Bolt
- 2 x Shoulder Bush
- 2 x Dome Cap
- 2 x Dome Cap
- 1 x

TOOLS YOU WILL NEED



ATTENTION!

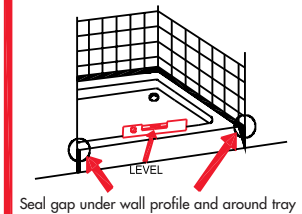
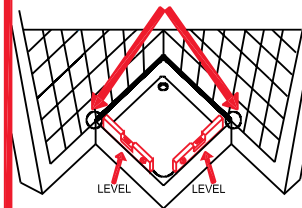
PLEASE INSPECT CONTENTS IMMEDIATELY ON RECEIPT FOR ANY DAMAGE CAUSED DURING TRANSIT. ANY CLAIMS MADE LATER CANNOT BE ACCEPTED

BEFORE INSTALLING THE SHOWER DOOR CHECK THAT THE TRAY IS LEVEL AND PROPERLY SEALED AT THE WALL. THE ENCLOSURE WHEN COMPLETED MUST NOT OVERHANG THE OUTSIDE OF THE TRAY. CHECK THE OPERATION OF THE DOOR BEFORE SEALING.

IMAGE SHOWERS ARE DESIGNED TO BE INSTALLED OVER TILING. THE TRAY MUST BE PROPERLY SEALED ALL AROUND THE EDGES WHERE IT MEETS THE TILING AND OR WALLS

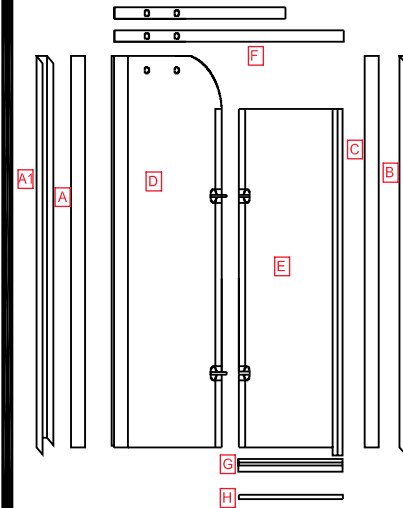
LEVEL TRAY AND SEAL

Seal gap under wall profile and around tray

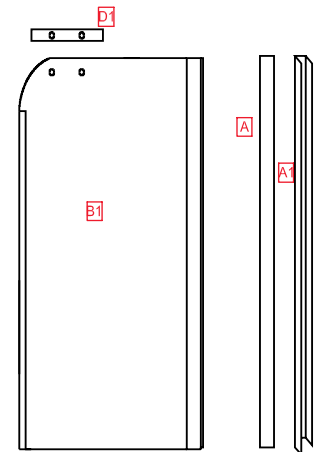


Seal gap under wall profile and around tray

MAJOR COMPONENTS FOR HINGE DOOR



MAJOR COMPONENTS FOR SIDE PANEL

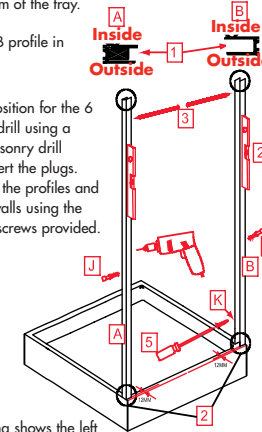


STEP 1 INSTALL WALL PROFILES

1. Make sure the wall profiles are fitted the right way around.
2. Align wall profiles A vertically to tiled wall, in 15mm from the rim of the tray.

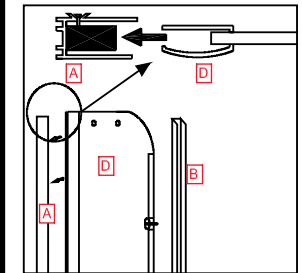
2A. Align B profile in 52mm

3. Mark position for the 6 holes and drill using a 5.5mm masonry drill bit and insert the plugs.
4. Replace the profiles and fix to the walls using the 6x32mm screws provided.



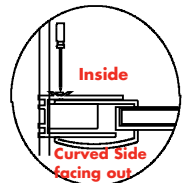
The drawing shows the left hand version.

STEP 2 FIT FIXED SIDE PANEL

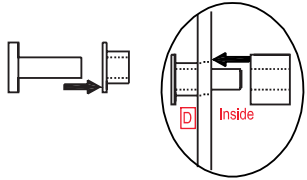


Slide in fixed panel D into the wall profile A. Secure with pre-installed screws

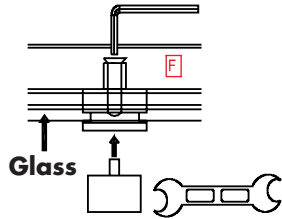
Fit the screws loosely



STEP 3 FIT TOP RAIL TO FIXED PANEL

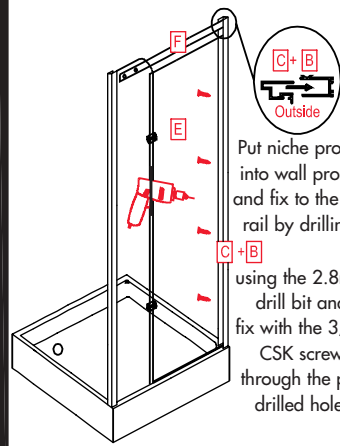


To fit the top rail insert centrebolt into shoulderbush and then insert into glass from outside and fit through bush on inside. Fit top rail onto centre bolts and fix with 2XM5X20mm bolts using allen key and 17mm spanner.

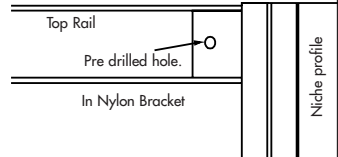


The niche fitting profile is the longer of the two profiles (-30mm)

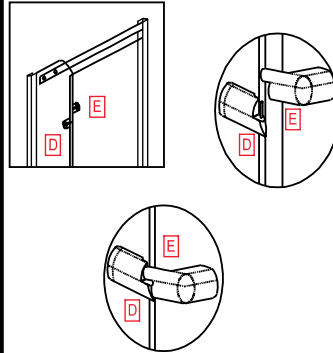
STEP 4 FIT NICHE FITTING PROFILE



Put niche profile into wall profile and fix to the top rail by drilling, using the 2.8mm drill bit and fix with the 3/4" CSK screw through the pre drilled hole.

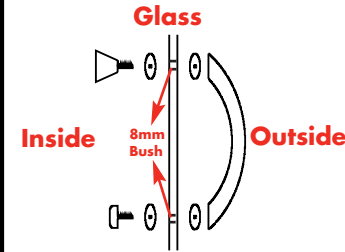


STEP 5 FIT MOVING PANEL



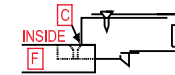
Fit hinge on door panel E onto hinge on the fixed panel D as shown. The hinge on the door panel is positioned above the hinge on the fixed panel. It slots into it and sits there

STEP 6 FIT HANDLE

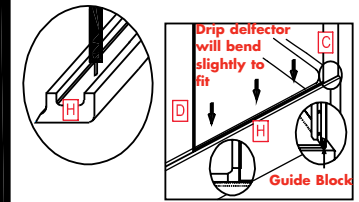


STEP 7 ALIGN AND FIX PROFILE

Ensure moving panel is parallel with the tray and that the magnets are sealing fully. then fix profiles using 2.8mm drillbit and the 5 x 1/2" CSK screws. Make sure the fixed panel is also secure using the 4 clamps.



STEP 8 FIT DEFLECTOR STRIP



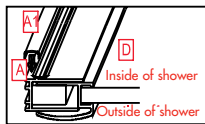
Put bead of silicone into slot on the back of drip deflector profile H as shown.

Slot drip deflector profile H into position on the tray and that the magnets are sealing fully. then fix profiles using 2.8mm drillbit and the 5 x 1/2" CSK screws. Make sure the fixed panel is also secure using the 4 clamps.

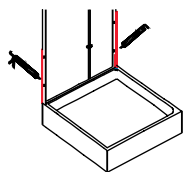
Make sure that each end of the drip deflector is fitted into the guide block as shown

ALLURE INLINE HINGE DOOR WITH SIDE PANEL

STEP 9 FINAL ADJUSTMENTS & SEALING

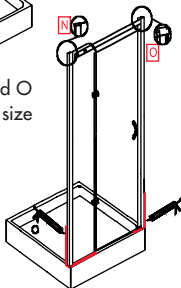


Clip screw cover strip onto both wall profiles.

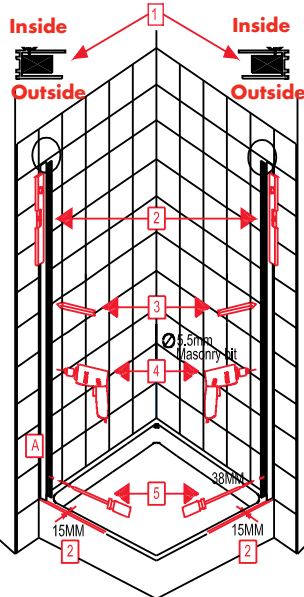


Add cover caps N and O as shown and trim to size required

Seal outside bottom as shown in red and inside of shower as shown in red.



STEP 1 INSTALL WALL PROFILES



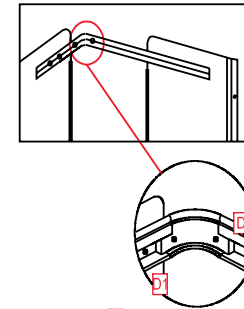
STEP 1 INSTALL WALL PROFILES

1. Make sure profiles are turned the right way round.
2. Align wall profiles A & A vertically to tiles wall keeping both profiles 15mm from edge of tray.
3. Mark the position of the holes and drill using a 5.5mm masonry drill bit.
4. Insert plugs and fix the profiles to the wall using the 6 x 32mm screws.

STEP 2 FIT FIXED PANELS AS NICHE FITTING.

STEP 3 FIT TOP RAILS TO FIXED PANELS AS NICHE FITTING

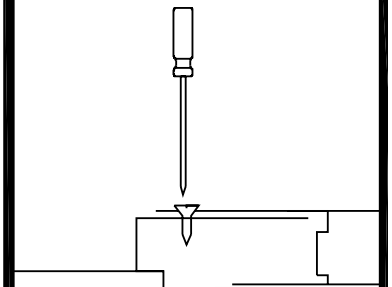
STEP 4 INSTALL CORNER JOINT



Slide the larger upper corner joint K between the two main frames D and D1 as shown. Use the two 1/2" CSK screws to fit the joint.

STEP 5 & 6 AS NICHE FITTING

STEP 7 ALIGN & TIGHTEN PROFILES



Ensure moving panel as parallel with the tray and that magnets are sealing fully. When adjusting correctly tighten clamps.

STEP 8 & 9 AS NICHE FITTING